



# **FACT SHEET**

## **FOR EXCHANGE STUDENTS**



# **2022**

[incoming@eafit.edu.co](mailto:incoming@eafit.edu.co)



## ACADEMIC CALENDAR

### SPRING 2022

Semester dates: January 24th - June 10th  
Nomination Deadline: October 10th  
Application Deadline: October 15th  
Acceptance letters: October 30th  
Course registration: Nov 23rd  
Orientation day: January 18th

### FALL 2022

Semester dates: July 18th - November 25th  
Nomination Deadline: April 24th  
Application Deadline: April 30th  
Acceptance letters: May 15th  
Course registration: June 3rd  
Orientation day: July 12th

## APPLICATION

Students need to be nominated by home university (except for free movers)

### Language requirement:

- B1 in Spanish for courses taught in Spanish
- For courses taught in English no certificate needed

### Documents:

- A copy of the biographical page of the passport (HQ/scanned)
- International Health insurance (presented in the orientation day)
- CV for graduate students
- Student photo

## COURSES

To find the course descriptions follow these steps:

1. Please select your academic program according to the school (scroll down until you find them)
2. Once you have selected the program, select: "Plan de Estudios" in the dark blue upper banner.
3. Then click on "Ver malla curricular completa"
4. You will find the courses in small boxes.
5. Click on "Contenido" to select the course description in Spanish or English.

## GRADING SYSTEM

Grading scale: 0.0 to 5.0.

Minimum passing grade: 3.0 for undergraduate

3,5 for graduate.

3 EAFIT credits = 144 hours of workload/semester

## LIVING COST

A monthly budget varies from 550USD to 750USD

## SPANISH FOR FOREIGNERS



## COURSES TAUGHT IN ENGLISH



**visit our  
website**



**Campus  
Tour**

# OUR TEAM



**MARIA TERESA URIBE**

Head

[muribejl@eafit.edu.co](mailto:muribejl@eafit.edu.co)

**ANA MARÍA RESTREPO**

Academic Mobility  
Coordinator

[amrestrep4@eafit.edu.co](mailto:amrestrep4@eafit.edu.co)



**ISABEL CUBILLOS**

Academic cooperation  
Coordinator

[mobilitycoord@eafit.edu.co](mailto:mobilitycoord@eafit.edu.co)



**LIZETH SÁNCHEZ**

Incoming and Outgoing  
Mobility Advisor

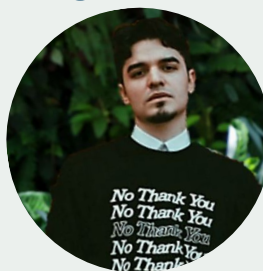
[incoming@eafit.edu.co](mailto:incoming@eafit.edu.co)



**FABER ALZATE M.**

Agreements Advisor

[agreements@eafit.edu.co](mailto:agreements@eafit.edu.co)



**SEBASTIÁN RODRÍGUEZ**

Academic Mobility Advisor

[international@eafit.edu.co](mailto:international@eafit.edu.co)

